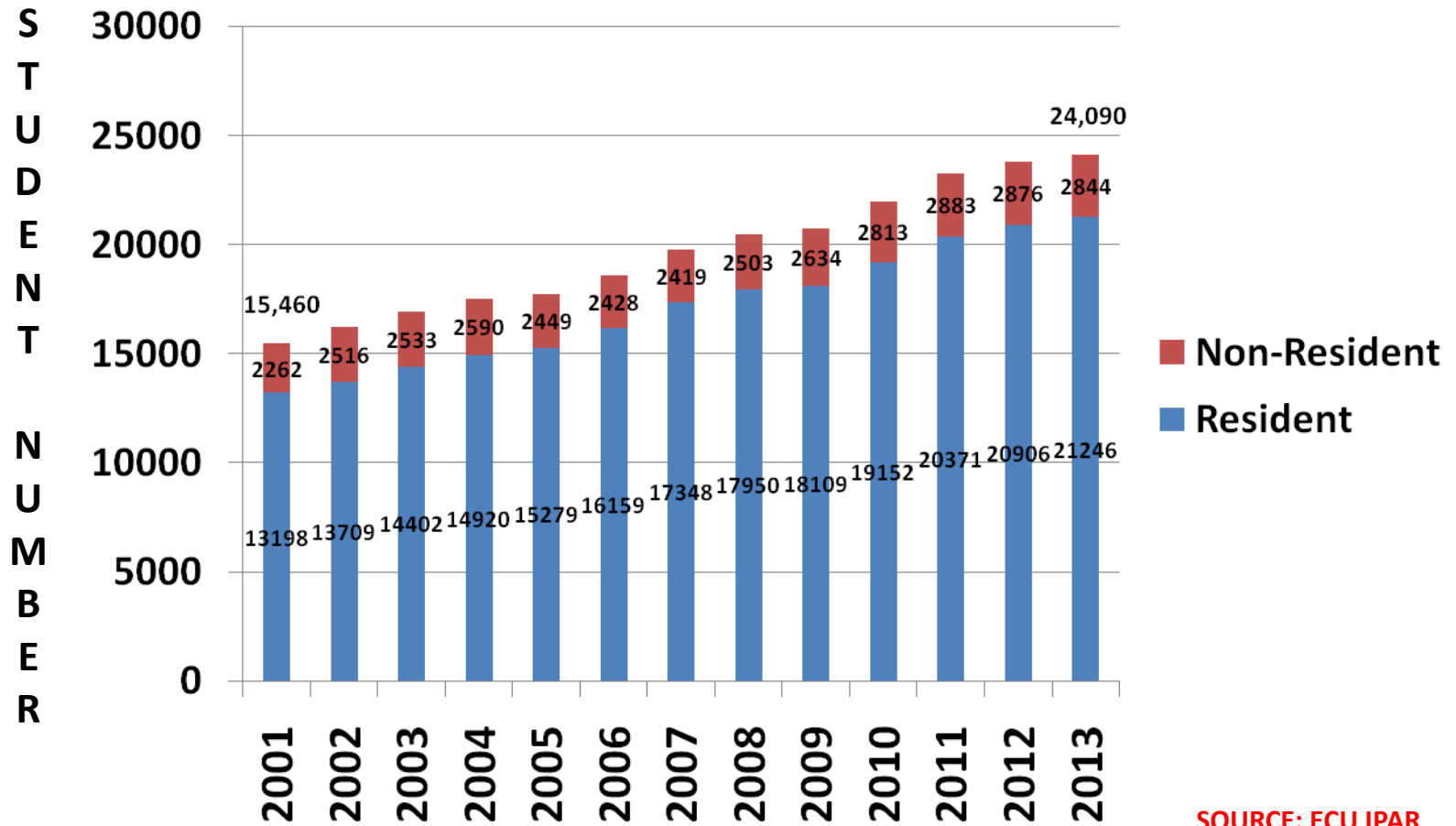


TUITION SUBCOMMITTEE

**TOPIC: HISTORICAL and PROJECTED
TUITION INCREASES**

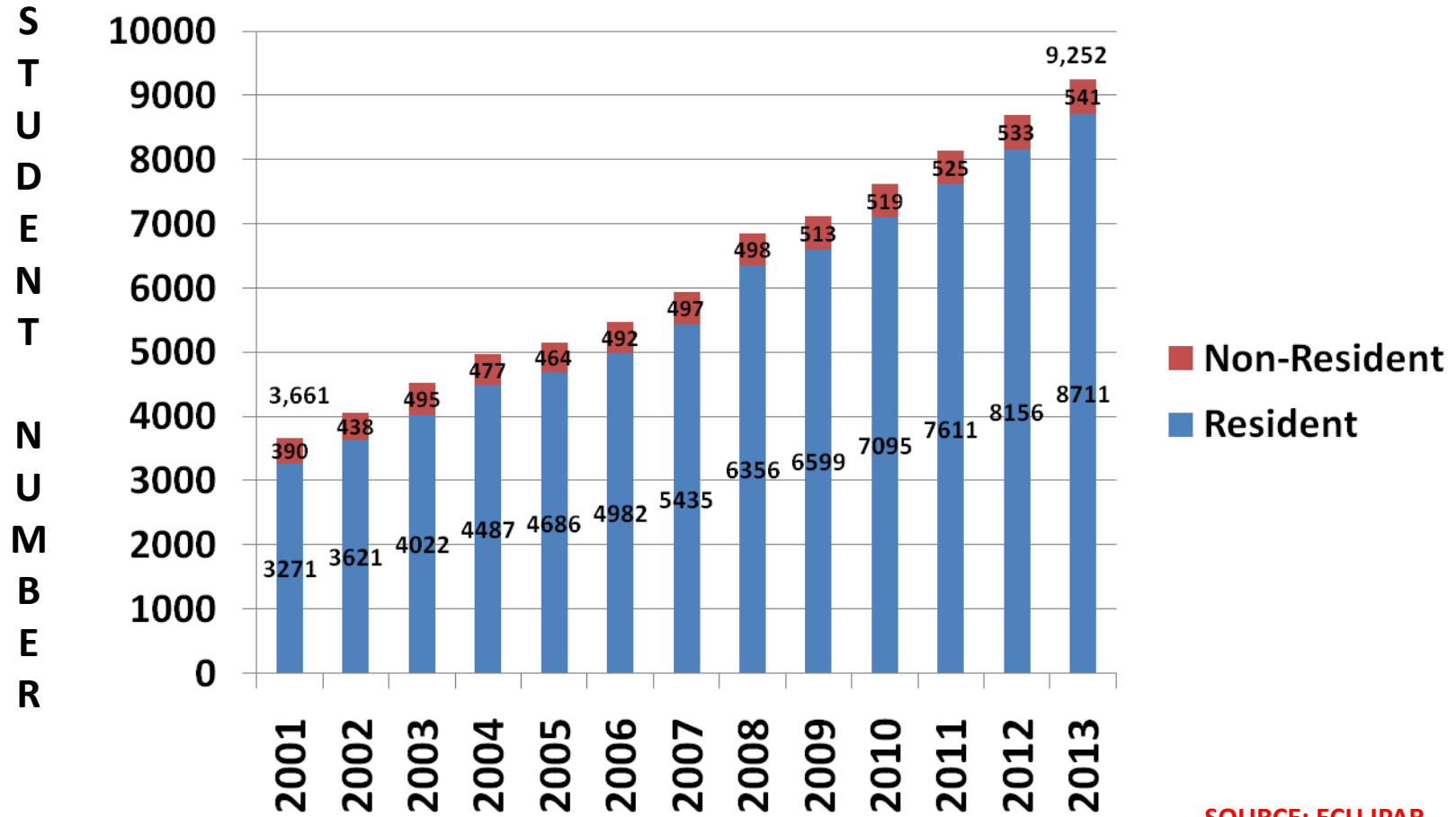
August 2009

ECU Undergraduate Student HEAD COUNT Enrollment: Historical & Projected (2001-2013)



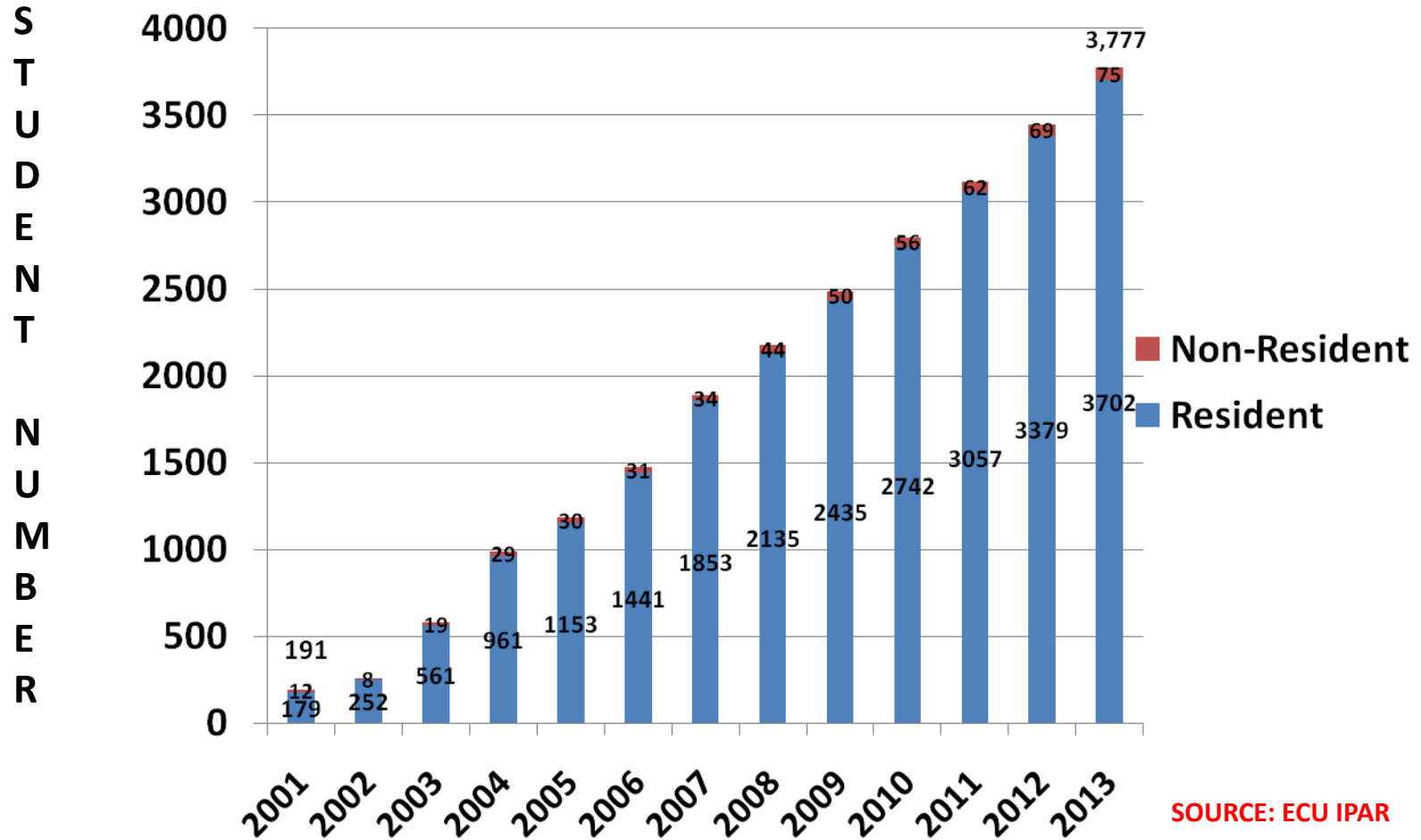
ECU Graduate Student HEAD COUNT

Enrollment: Historical & Projected (2001-2013)



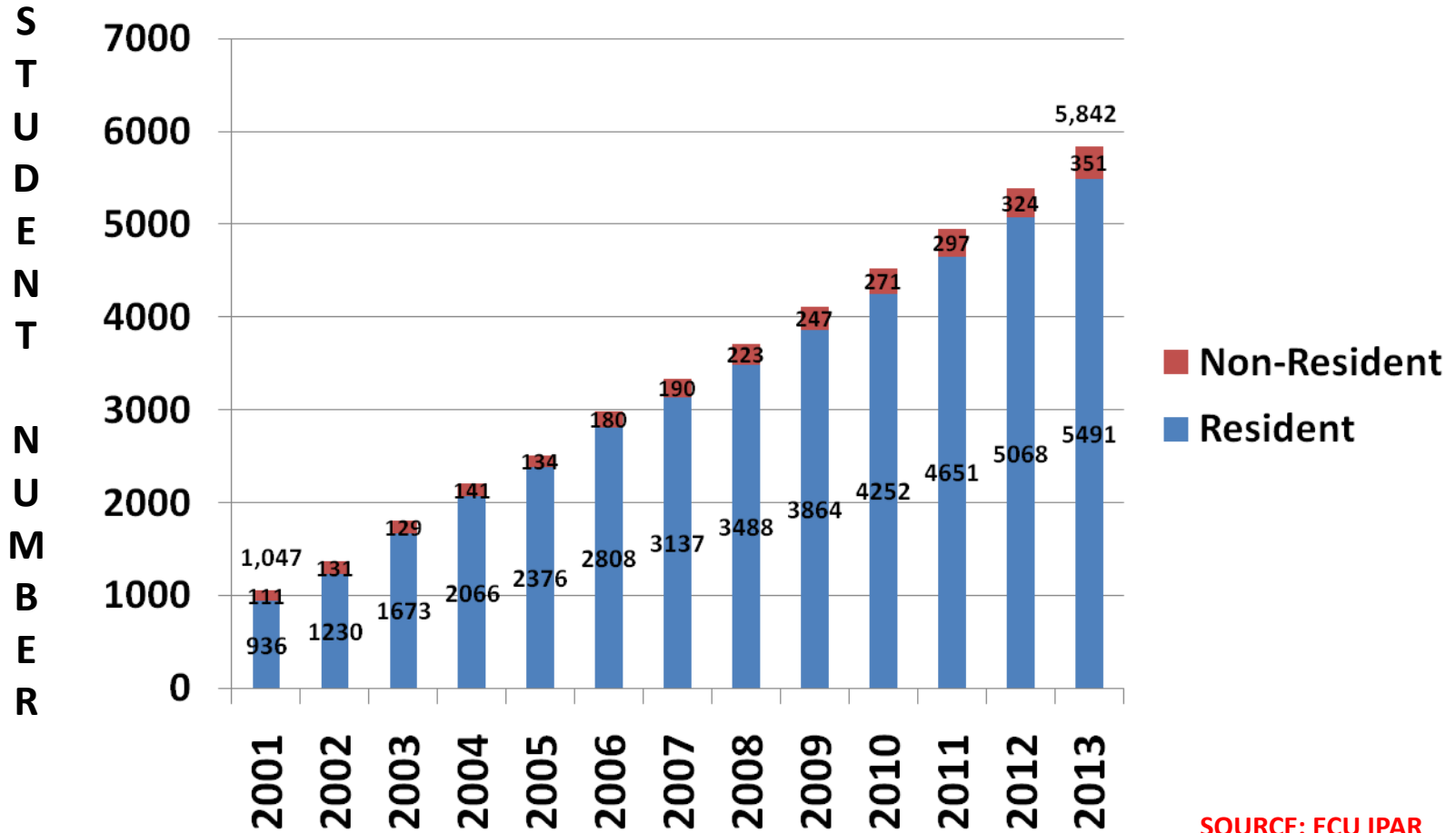
SOURCE: ECU IPAR

4 ECU Undergraduate Student HEAD COUNT Distance Education Enrollment: Historical & Projected (2001-2013)



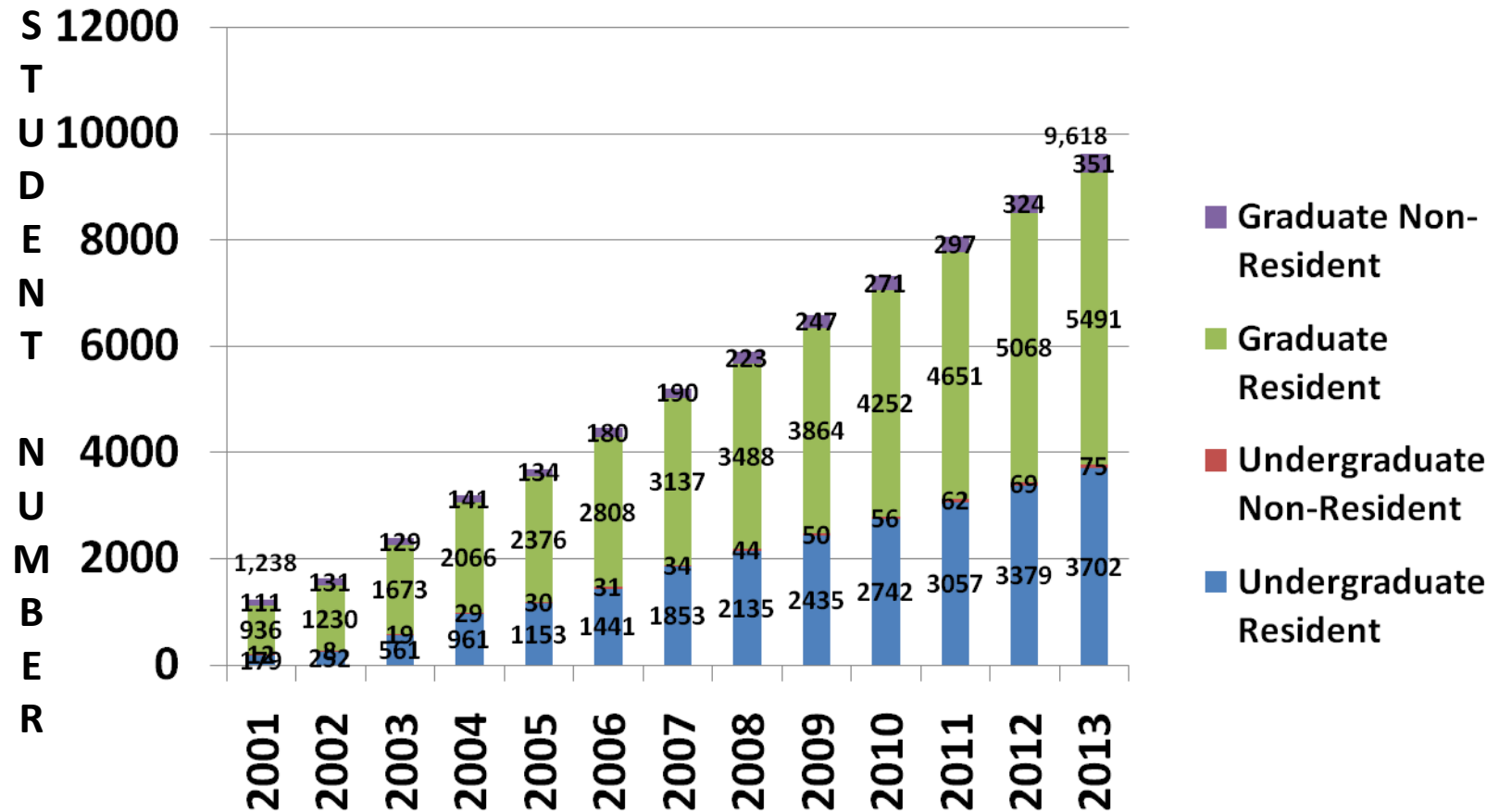
5

ECU Graduate Student HEAD COUNT Distance Education Enrollment: Historical & Projected (2001-2013)



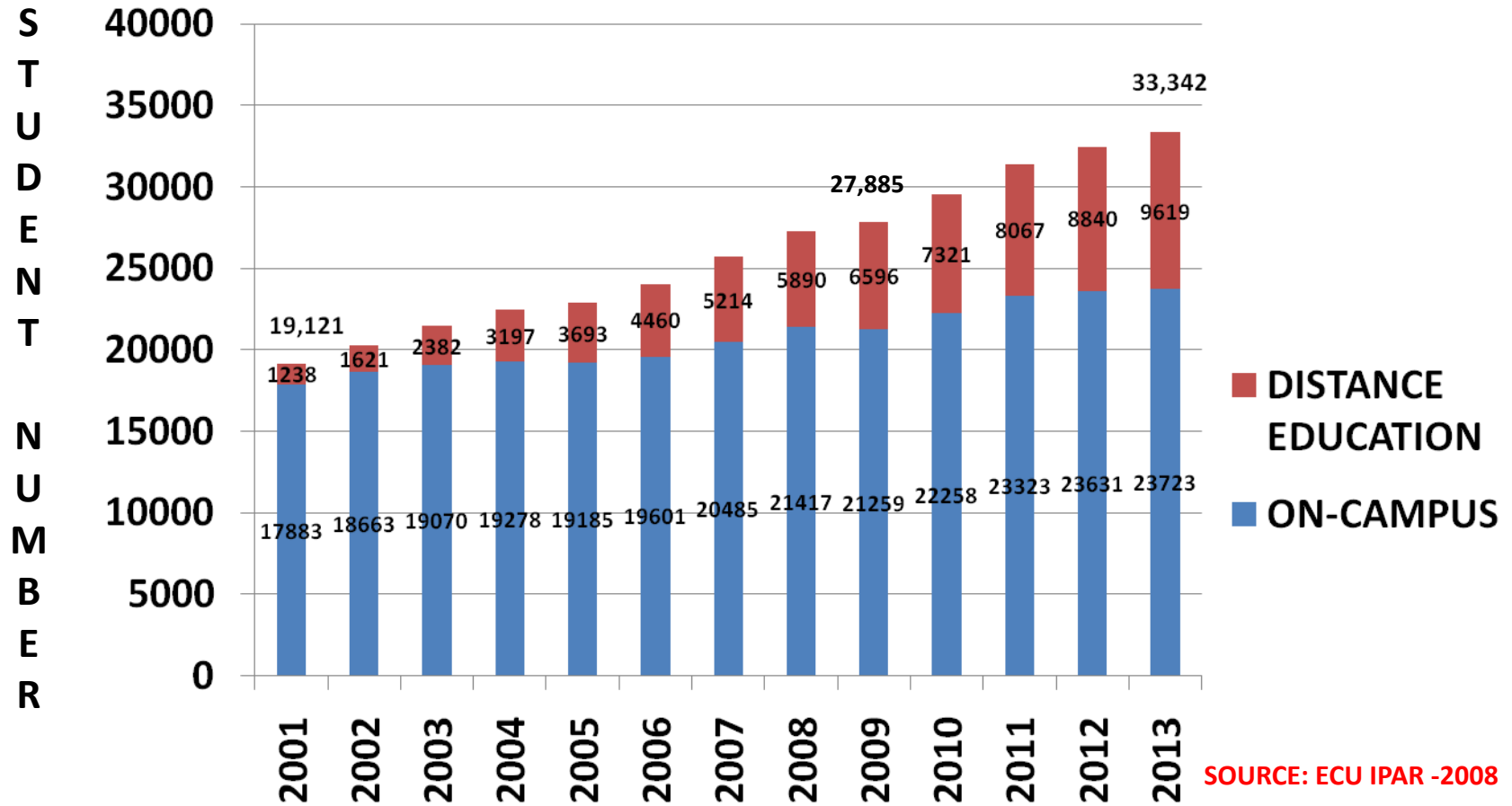
SOURCE: ECU IPAR

ECU Undergraduate + Graduate Distance Education Student HEAD COUNT Enrollment: Historical & Projected (2001-2013)

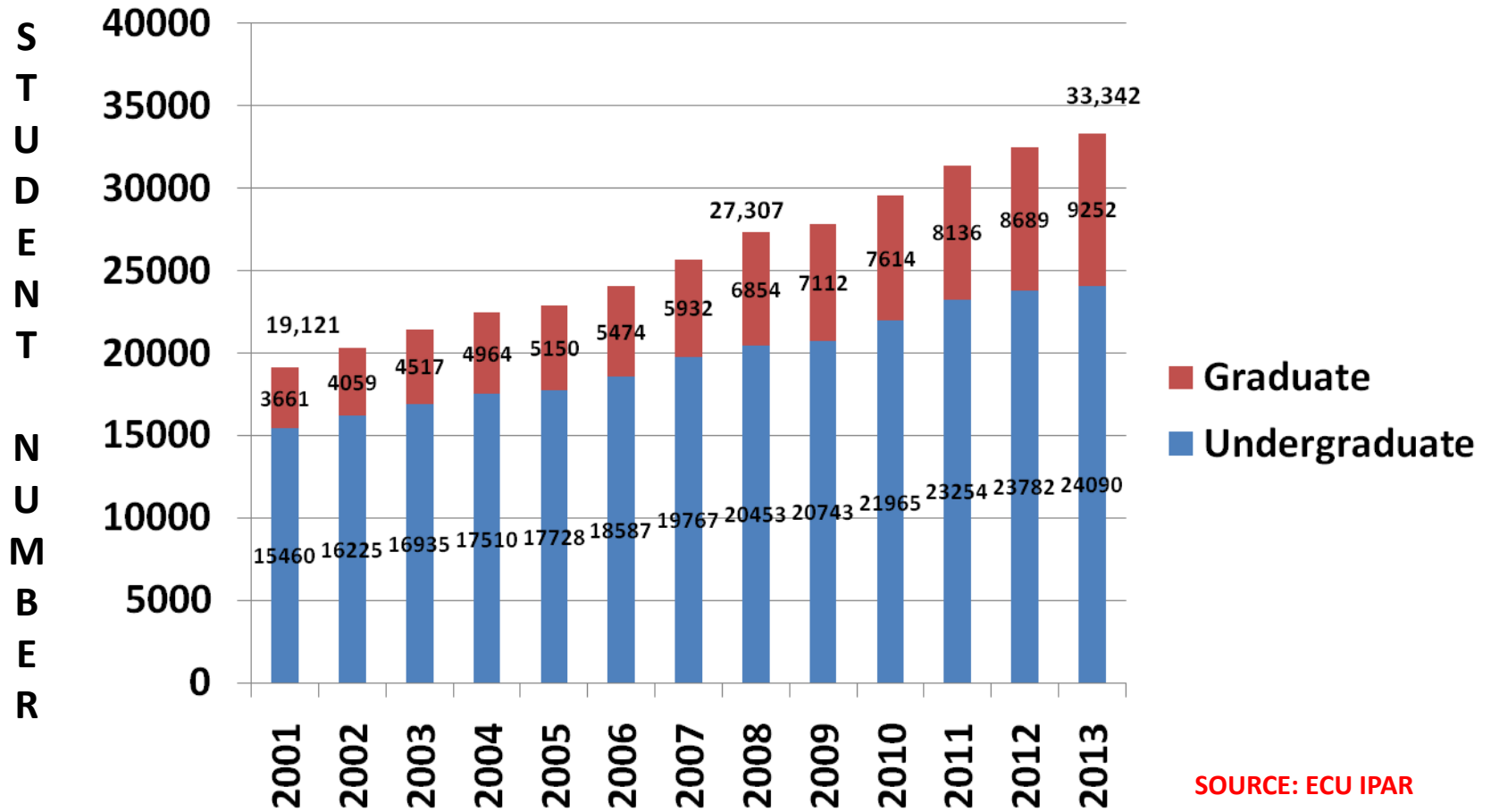


SOURCE: ECU IPAR

ECU ON-CAMPUS + DISTANCE EDUCATION Student HEAD COUNT Enrollment: Historical & Projected (2001-2013)

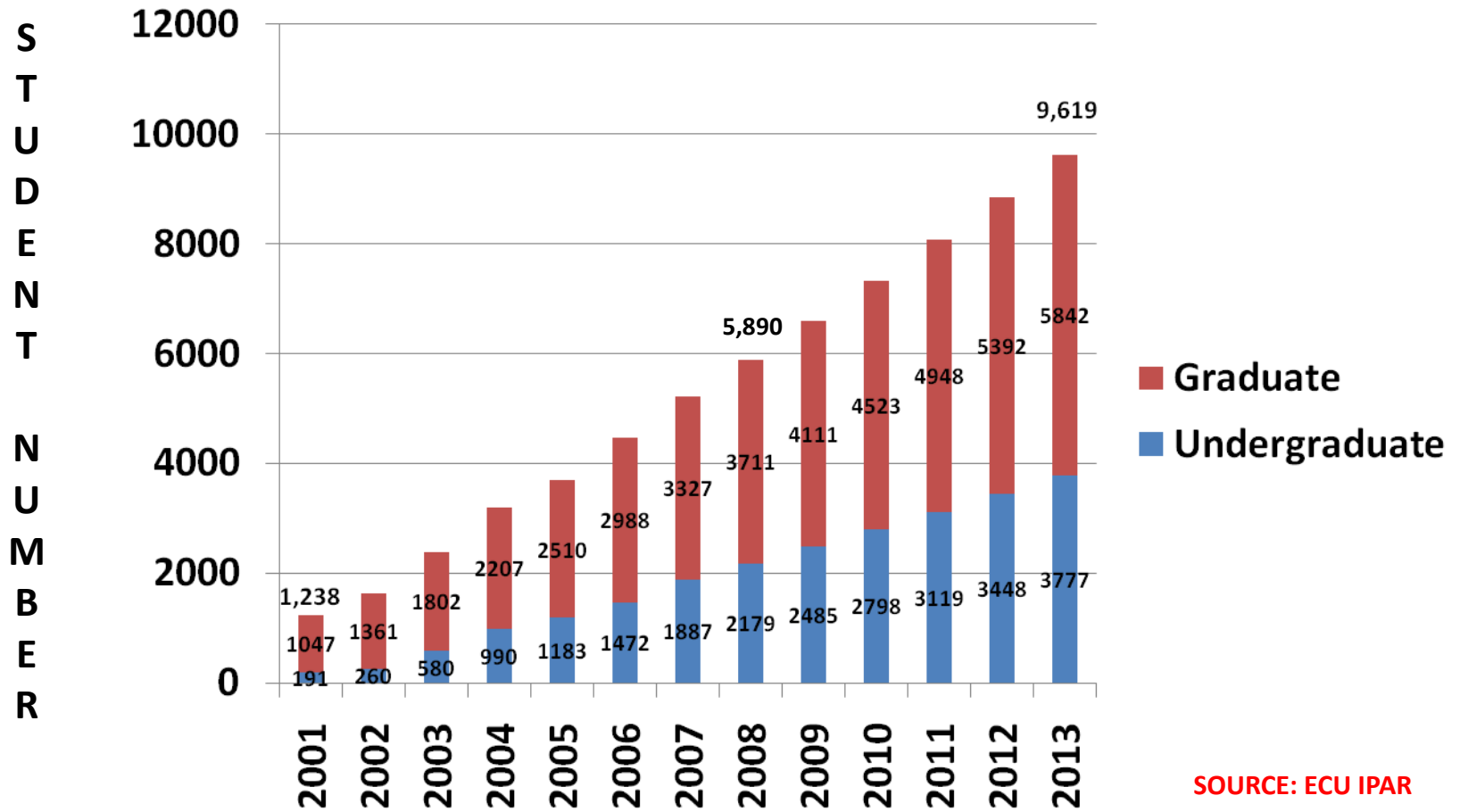


Head Count Enrollment

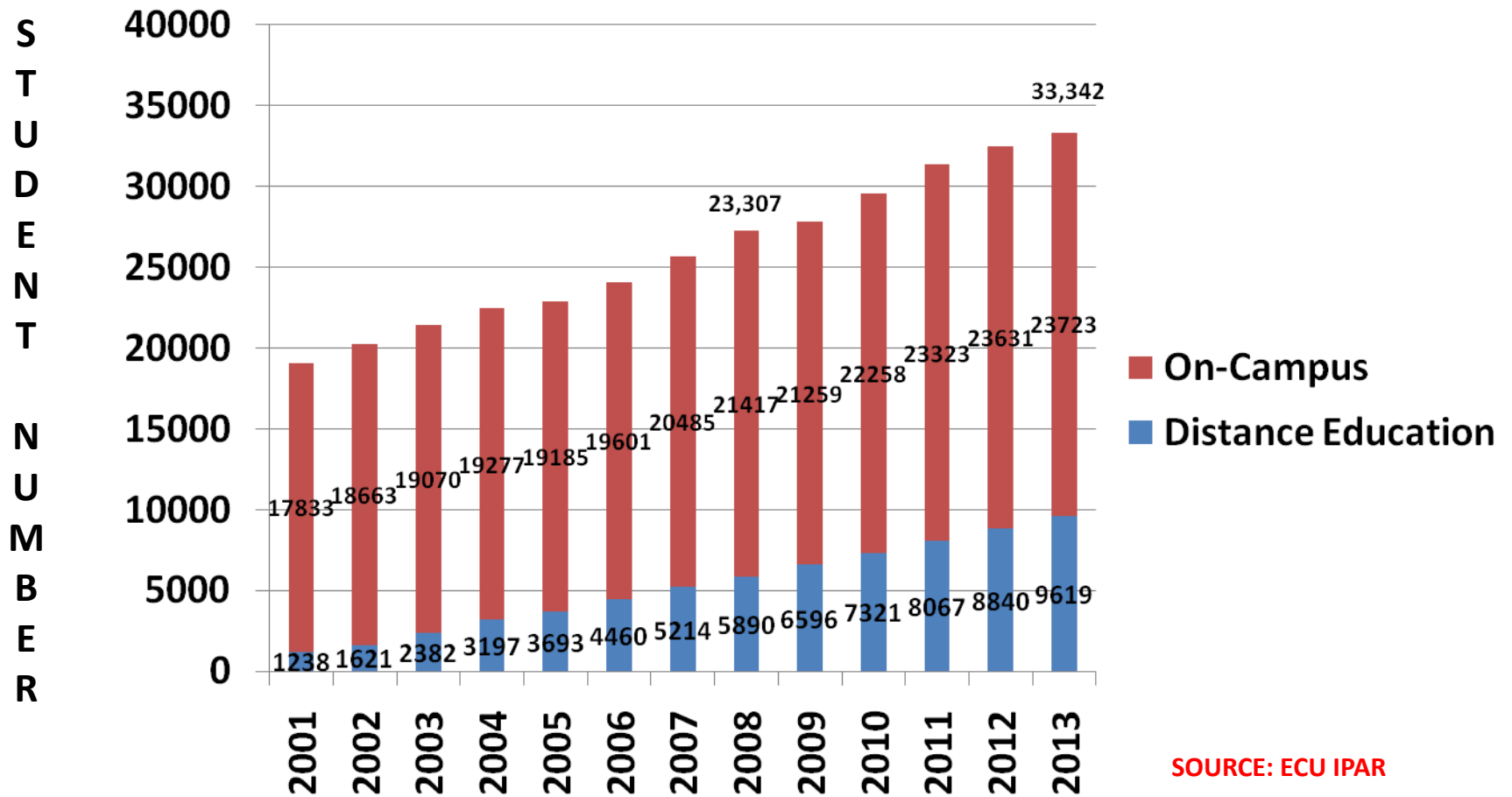


SOURCE: ECU IPAR

Head Count Distance Education



On-Campus + DE Head Count

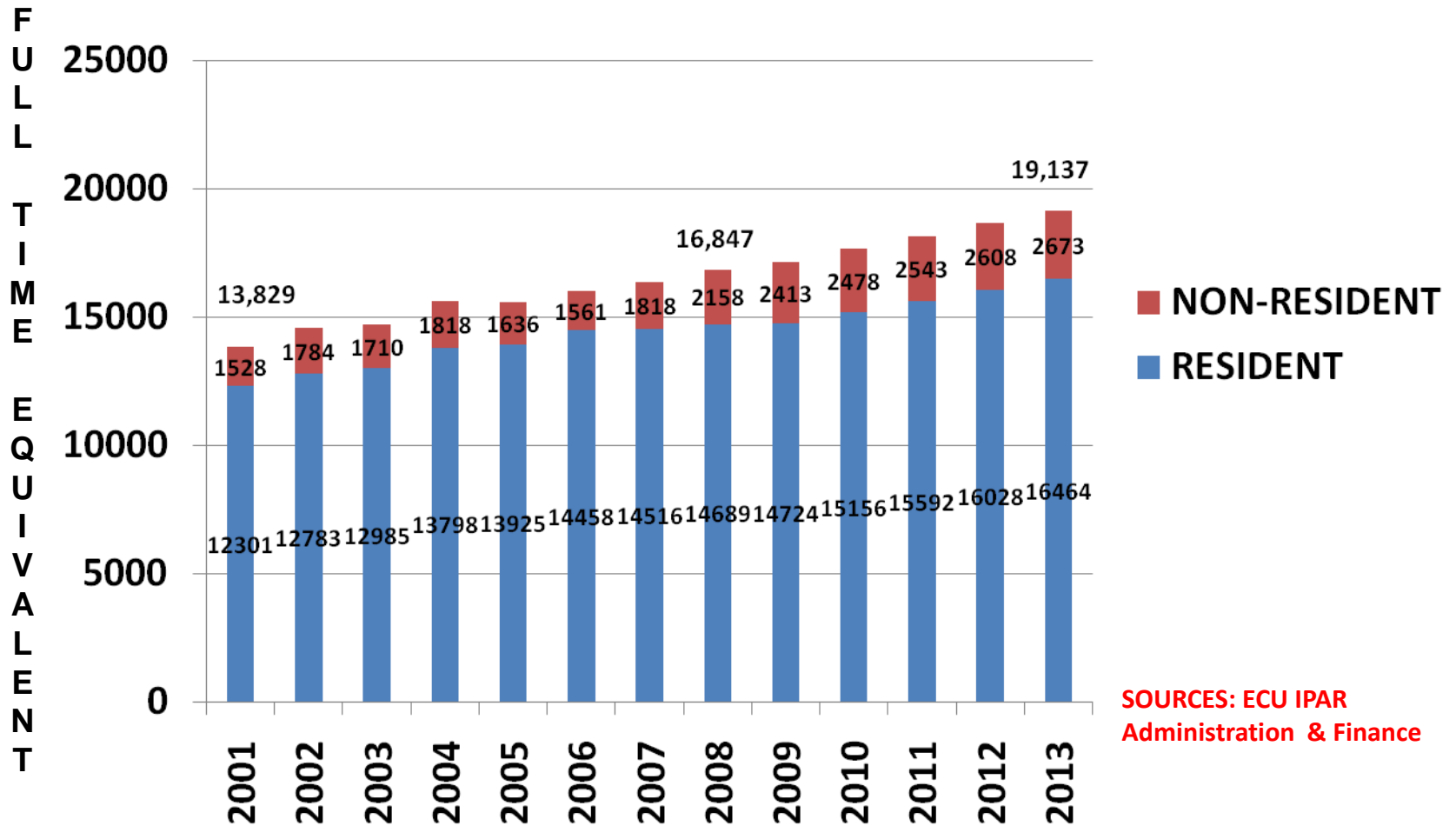


SOURCE: ECU IPAR

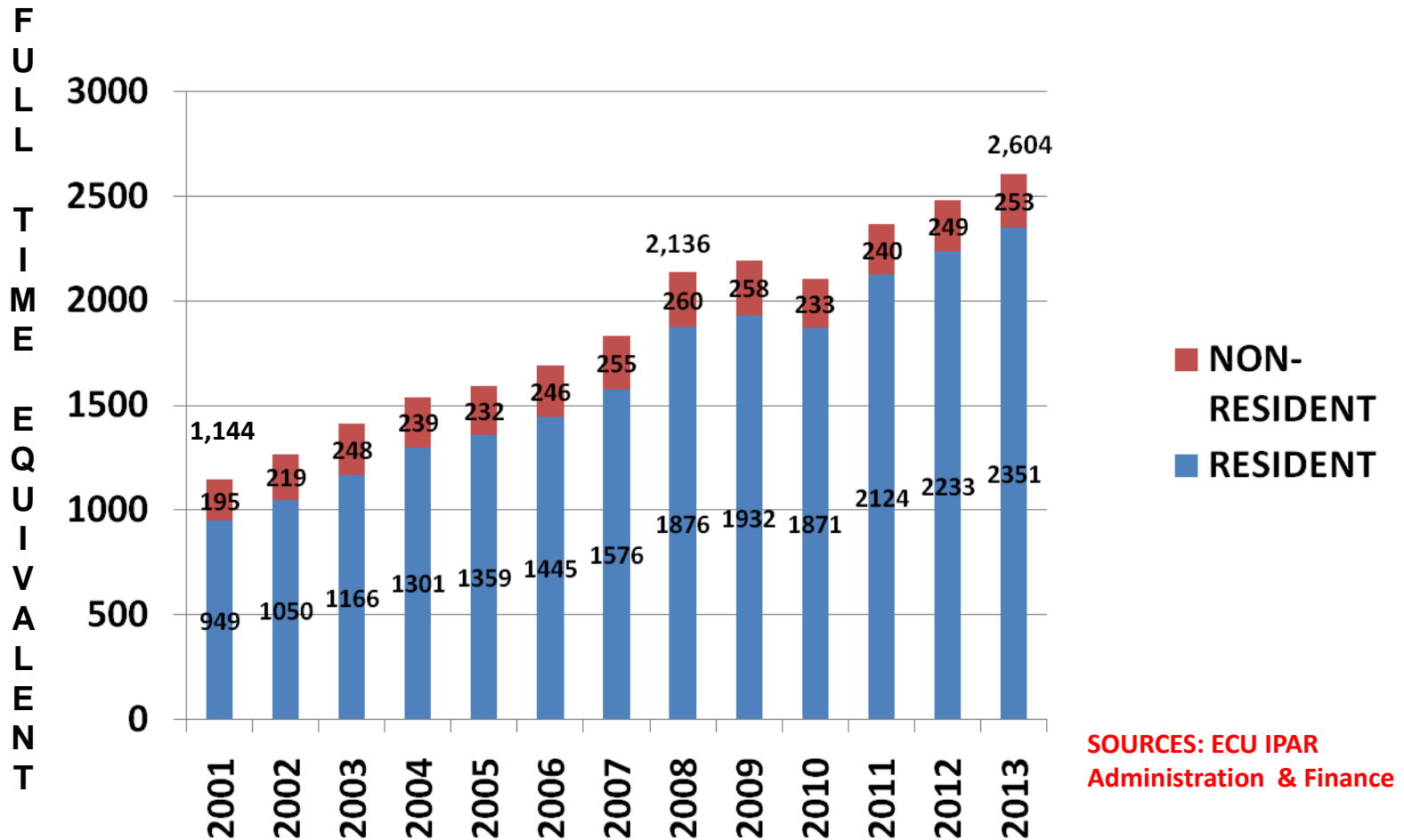
Student Full-Time Equivalent (FTE)

- **Full time undergraduate student is enrolled in:**
 - **14.8 credit hours per semester**
 - **29.6 credit hours per academic year**
- **Full time graduate student is enrolled in:**
 - **10.2 credit hours per semester**
 - **20.4 credit hours per academic year**

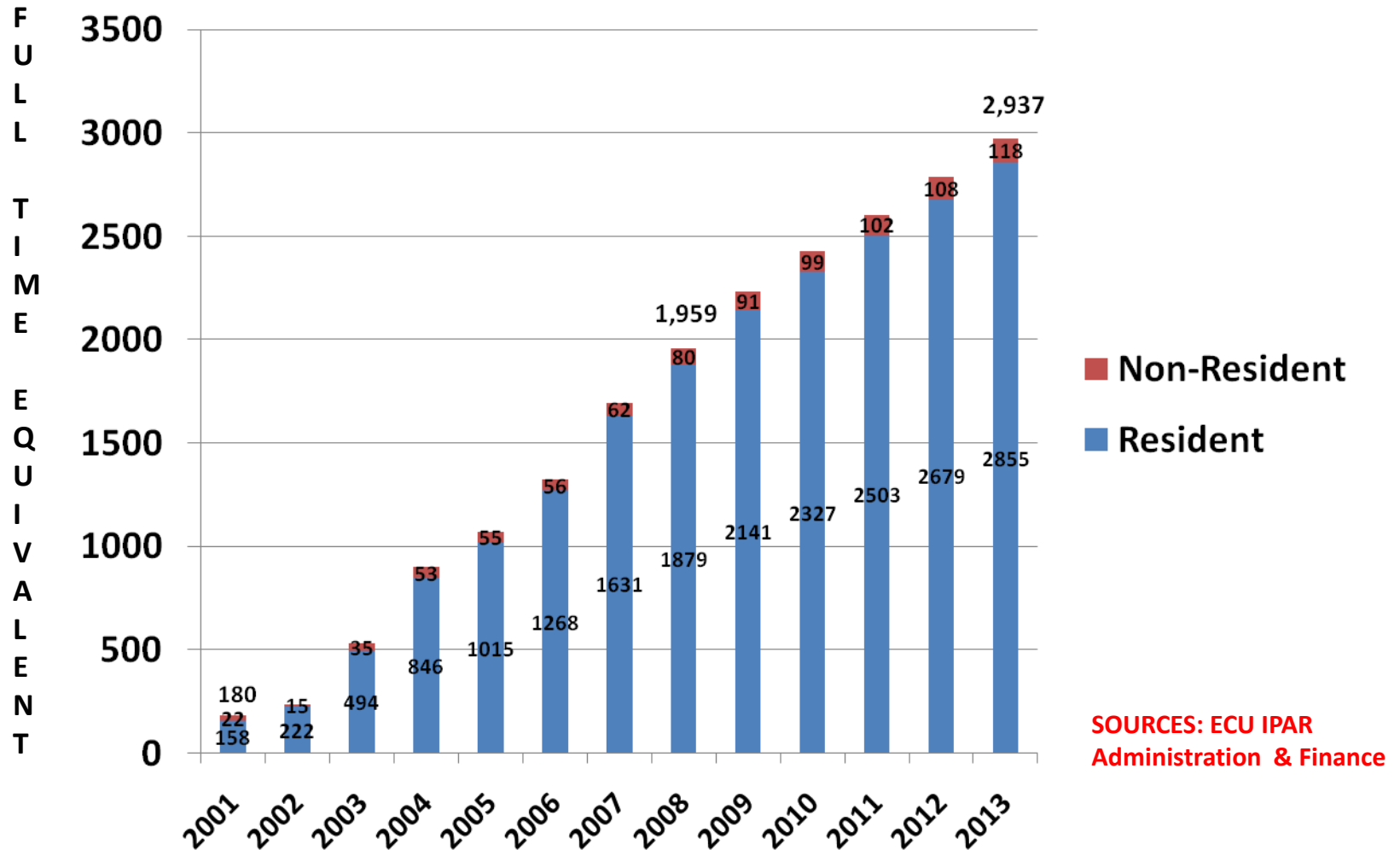
ECU On-Campus Undergraduate Student FTE (Full-Time Equivalent) Enrollment: Historical & Projected (2007-2013)



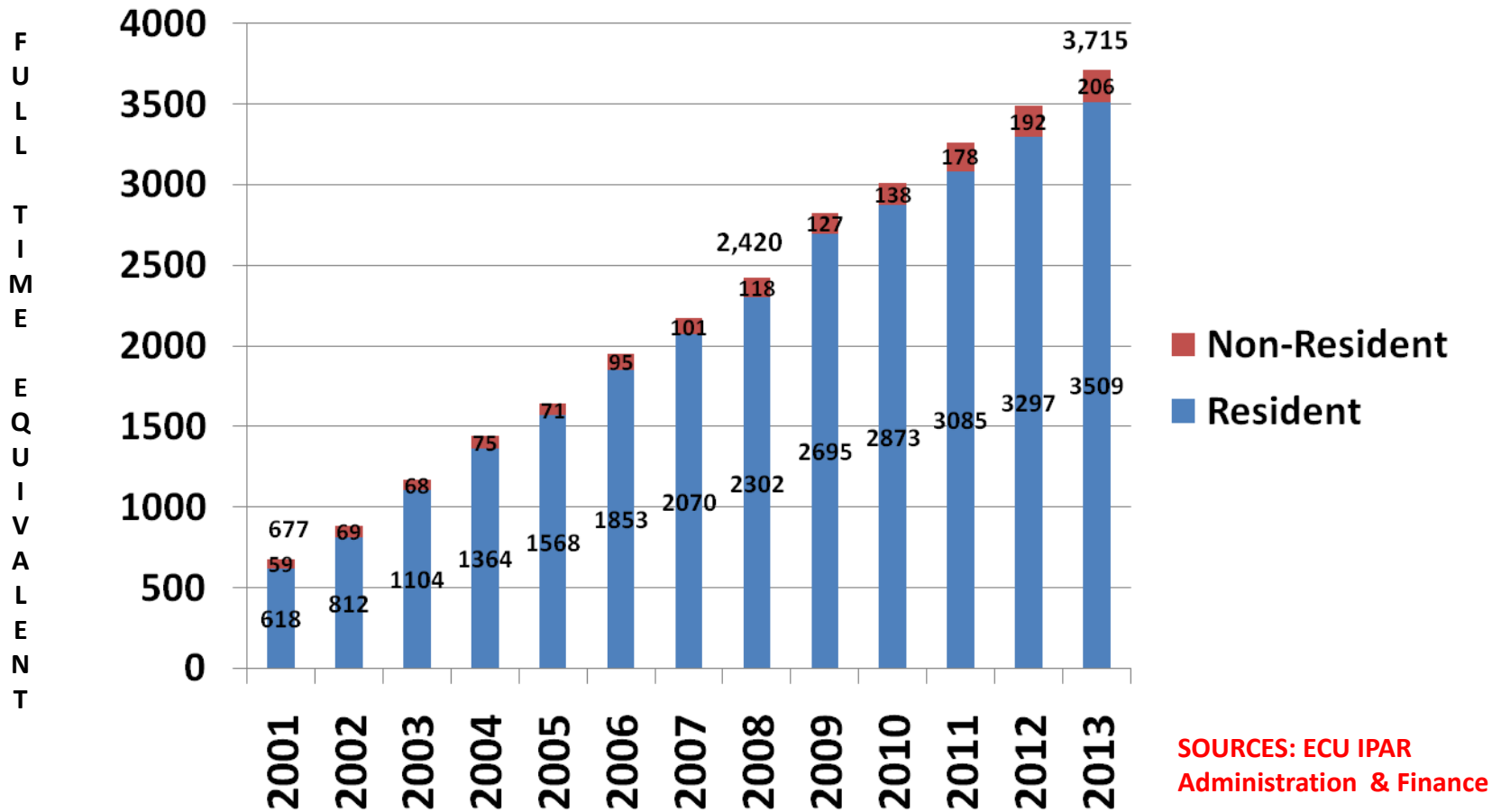
10 ECU On-Campus Graduate Student FTE (Full-Time Equivalent) Enrollment: Historical & Projected (2007-2013)



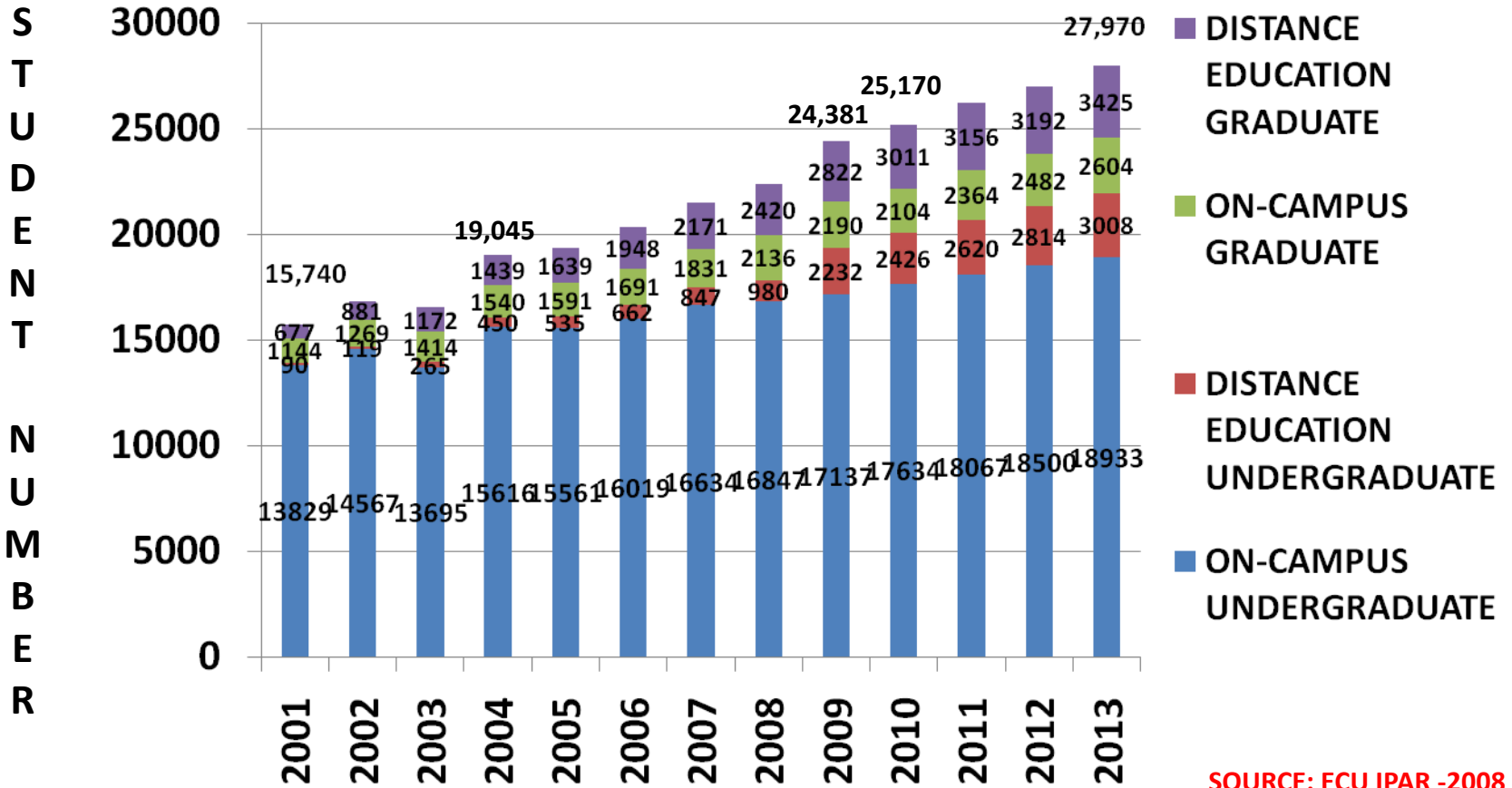
ECU Undergraduate Student Distance Education FTE Enrollment: Historical & Projected (2001-2013)



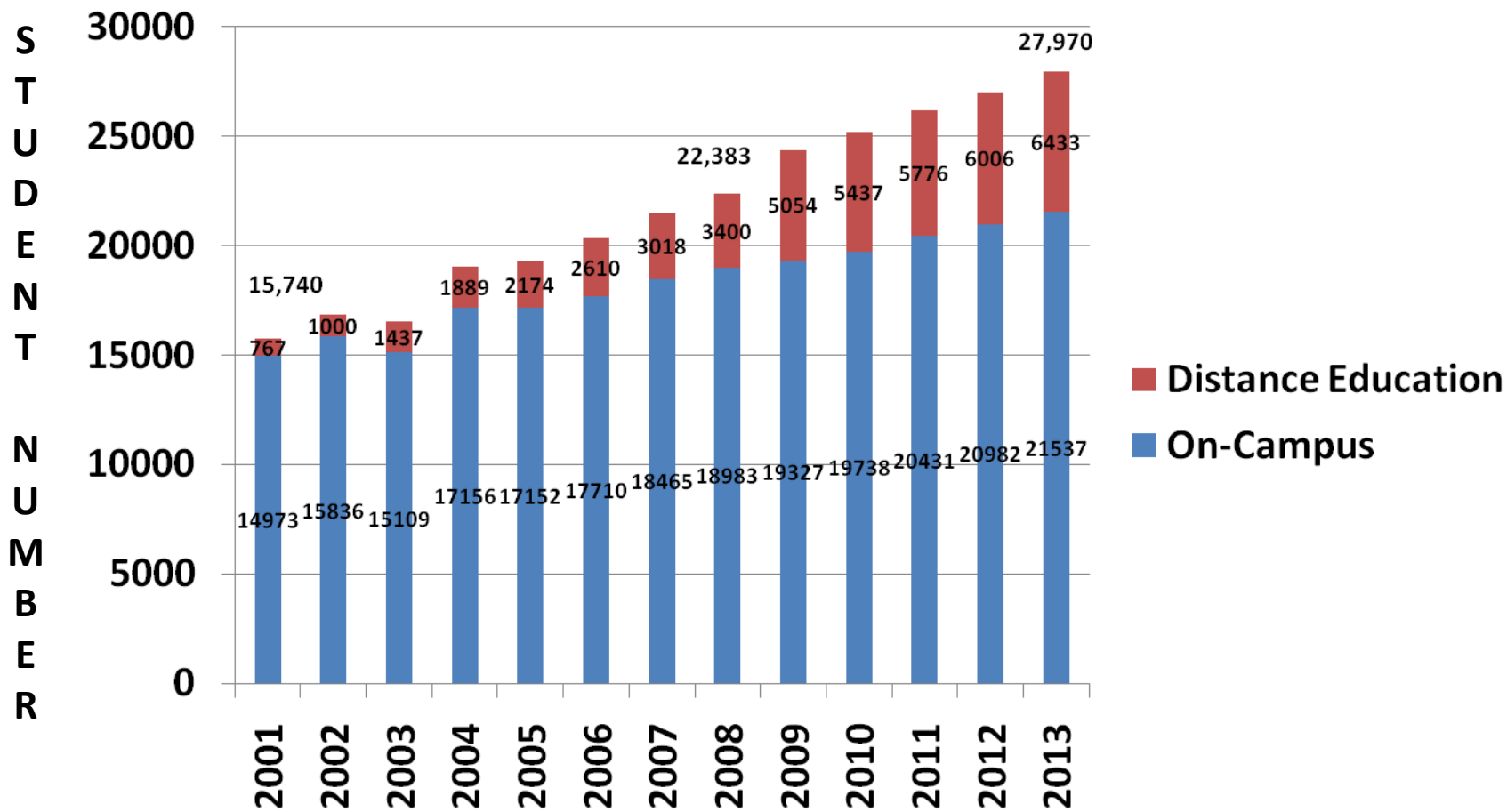
12 ECU Graduate Student Distance Education FTE Enrollment: Historical & Projected (2001-2013)



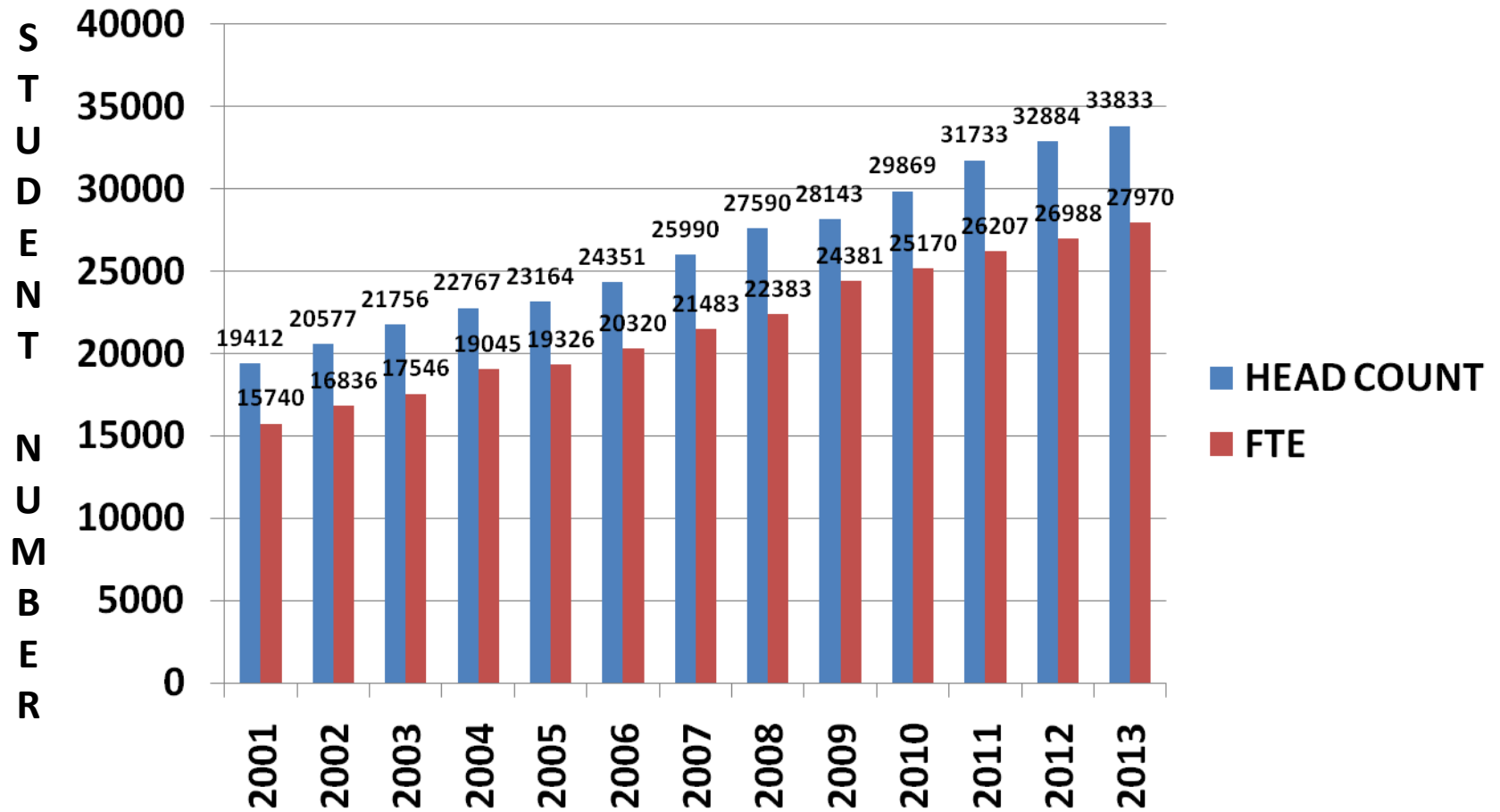
ECU ON-CAMPUS + DISTANCE EDUCATION Student FTE Enrollment: Historical & Projected (2007-2013)



ECU ON-CAMPUS + DISTANCE EDUCATION Student FTE Enrollment: Historical & Projected (2001-2013)



HEAD COUNT & FTE ENROLLMENT



ECU **Proposed** Tuition Rates

	<u>Board of Governors</u>	<u>General Assembly</u>	
	<u>2008</u>	<u>2009</u>	<u>2010</u>
• Undergraduate			
– Resident	\$2,445	\$2,491	\$2,691
– Non-Resident	\$12,959	\$13,325	(?)
• Graduate			
– Resident	\$2,926	\$2,995	\$3,195
– Non- Resident	\$13,242	\$13,311	(?)

Projection Considerations

- **Projected student enrollments provided by IPAR for 2009 and 2010**
- **Average ECU tuition increase rate = 2.18%**
- **Inflation**
 - **Higher Education Price Index (HEPI) = 3.6%**
 - **Consumer Price Index (CPI) = 5.6%**

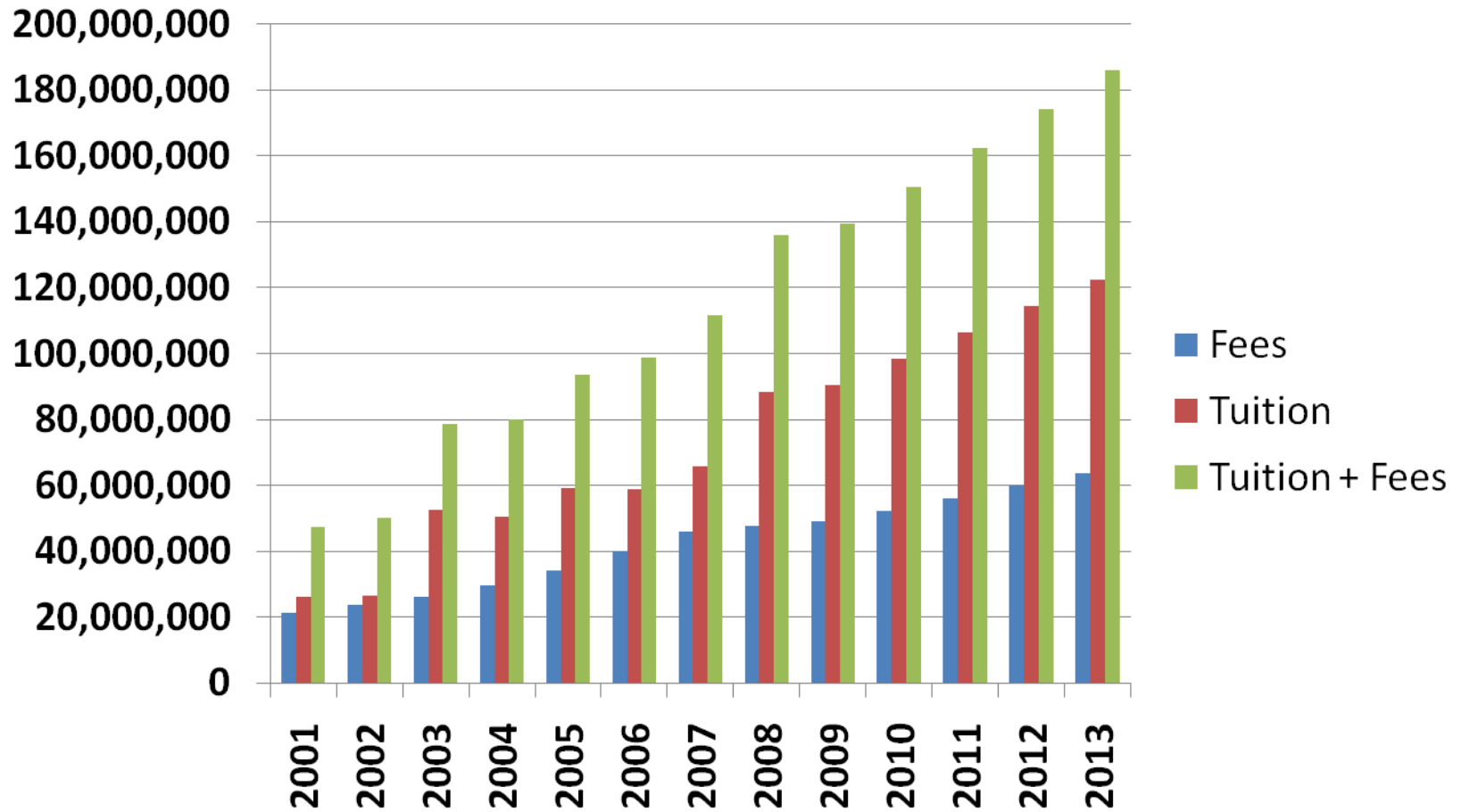
New Tuition Revenue Generated (2009 – 2013)

Year - Level	Tuition Percentage Increase	2.18% (ECU Average)	3.60% (HEPI)	5.60% (CPI)
2009				
Undergraduate	1,590,439			
Graduate	312,290			
TOTAL	1,902,729			
2010				
Undergraduate	4,235,919			
Graduate	948,915*	106,229**	176,341**	275,090**
TOTAL	5,184,834	5,291,063	5,361,175	5,459,924

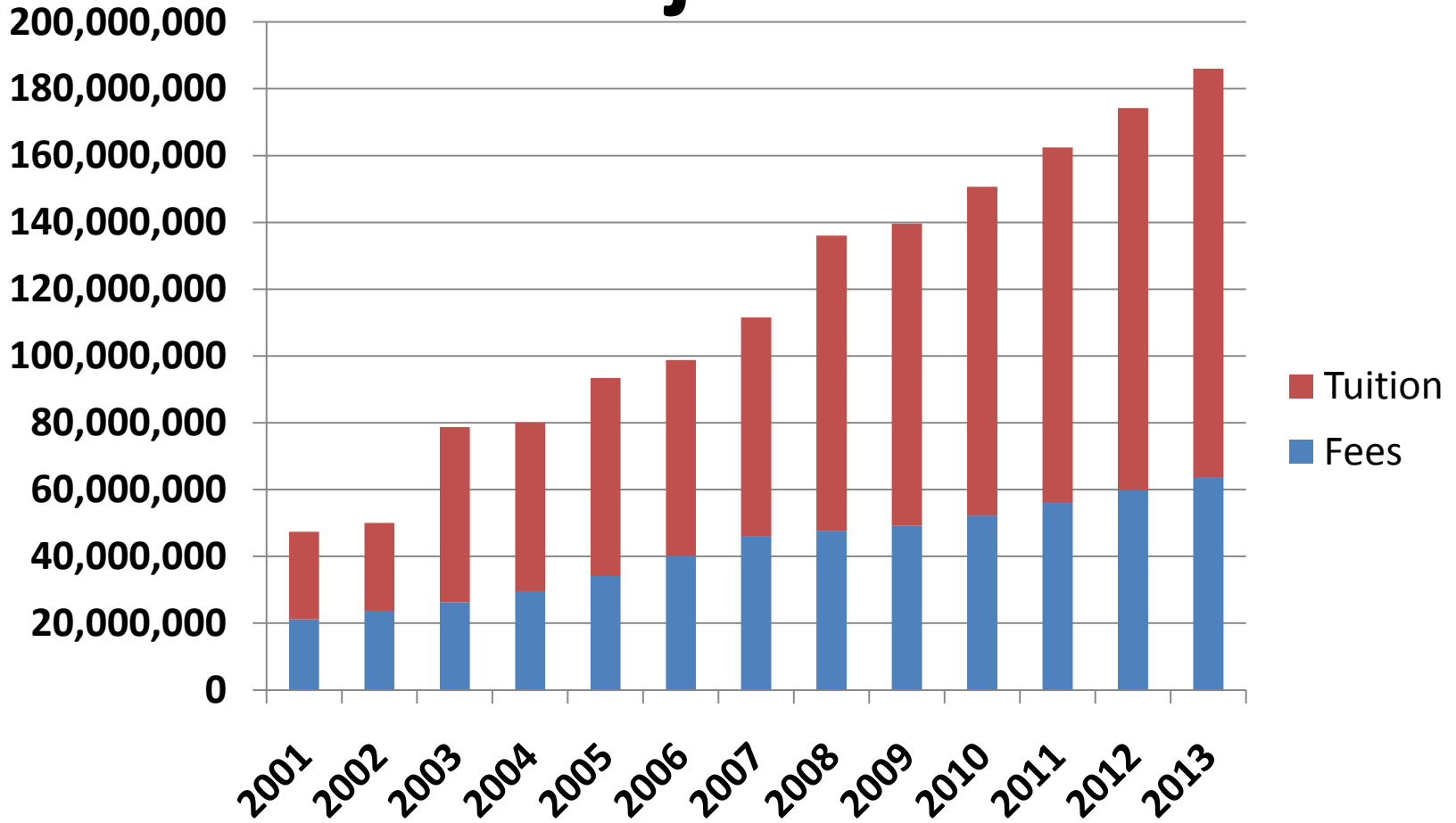
*Resident (Gen Assem); **Non-Resident

SOURCE: Administration and Finance

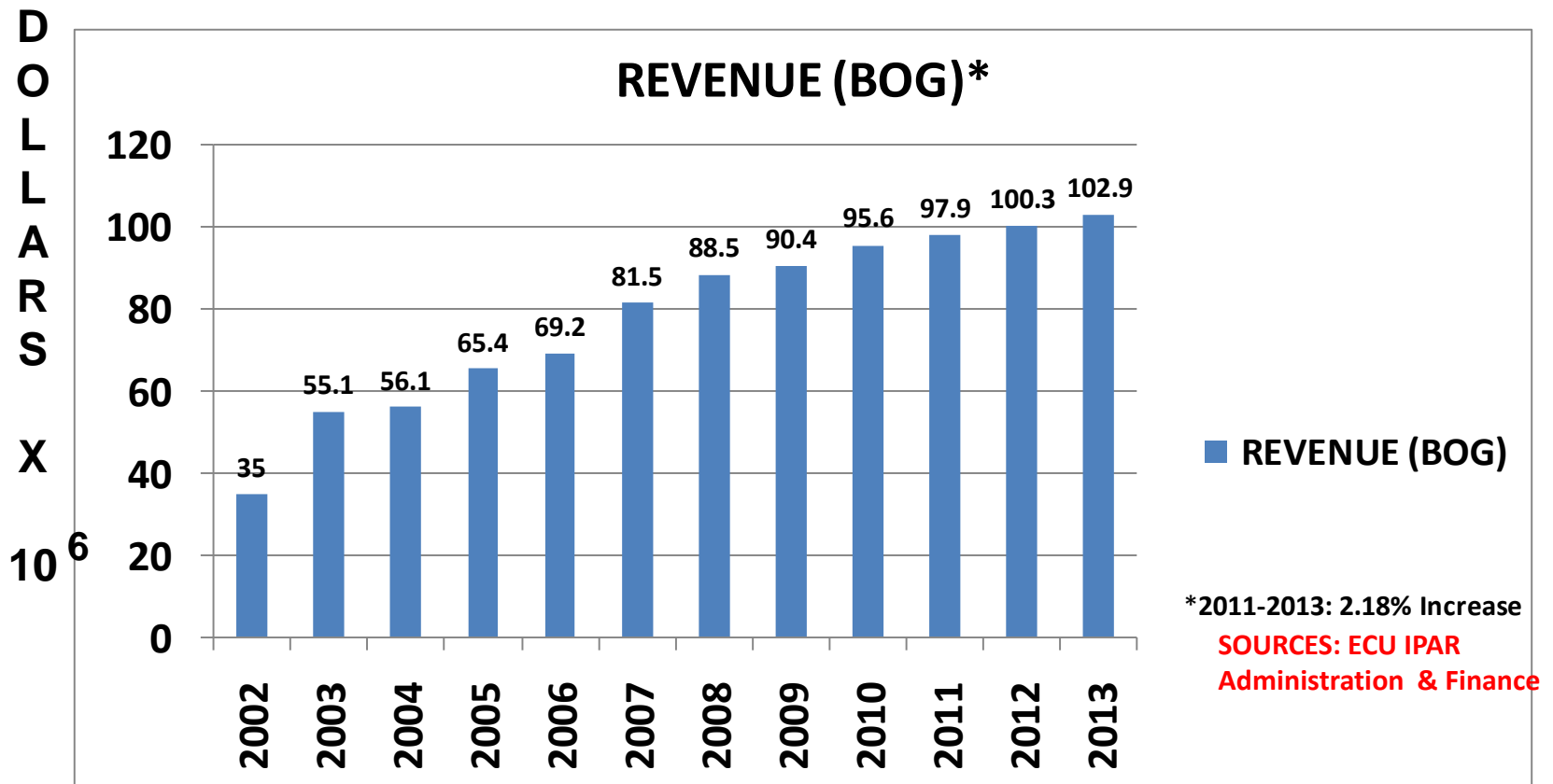
Tuition + Fees: Historical & Projected



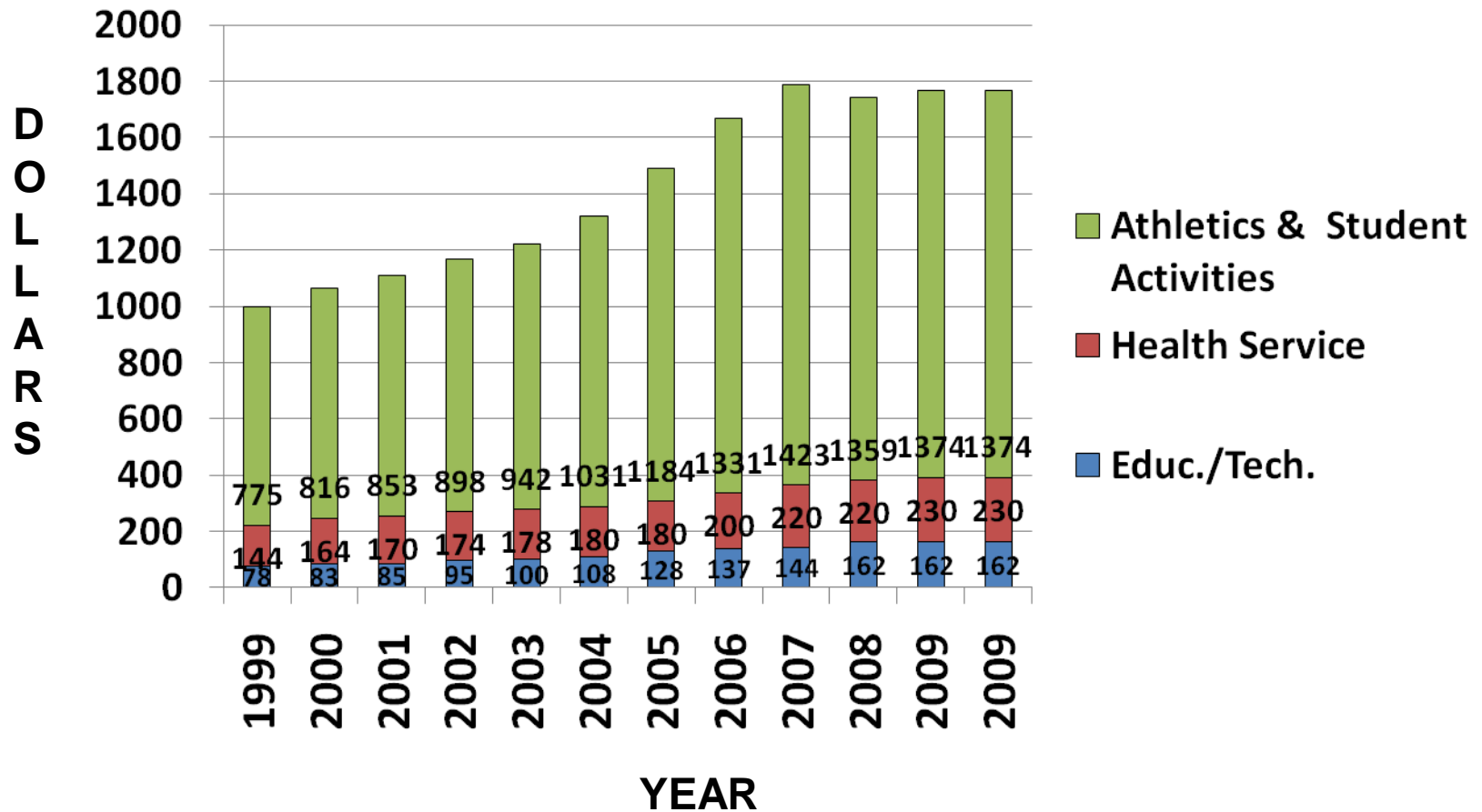
Tuition + Fees: Historical & Projected



TOTAL TUITION REVENUE GENERATED: HISTORICAL & PROJECTED (2002-2013)



ECU: STUDENT FEES + TUITION (1999-2009)



SOURCES: ECU FACT BOOK
ADMINISTRATION & FINANCE

TOTAL TUITION REVENUE GENERATED: HISTORICAL & PROJECTED (2002-2013)

